



ADAS 2.0

Technical Specifications

ADAS 2.0 provides high-speed multi-channel data acquisition and closed-loop control for new, existing, and retrofitted hydraulic test stands and standalone operations.



Height	73.4 inches
Depth	42 inches
Width	26 inches (excluding monitors) 45.8 inches (monitors extended)
Weight	675 lbs.

Computer Specifications

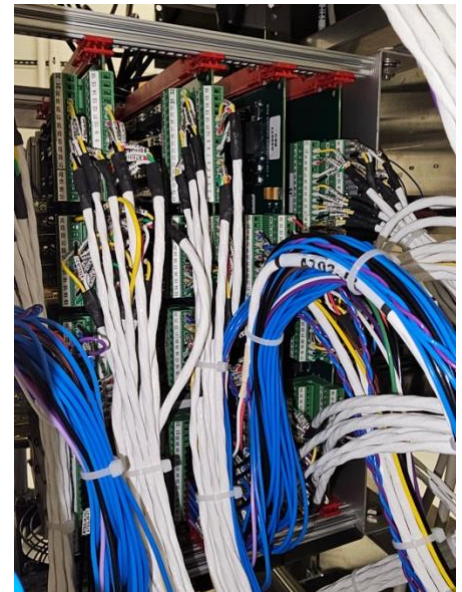
Brand & Model	Teguar TB-7145-MVS-I5-X2-IO-EXP
Processor	Intel® 13th Gen Core™ i5-13500TE 14-Core (1.3 Ghz)
Installed RAM	16 GB (15.7 usable)
Hard Drive	SSD, 512GB
USB & LAN	6x USB 3.2, 4x 2.5GbE LAN RJ-45
COM Ports	4x RS-232 COM ports
Dual Video	1x DP++, 1x HDMI Video Output
Exp. Slots	2x Expansion slots, PCIe x16 and PCIe x4
OS	MS Windows 11 Professional, 64 bit
Monitors	Two 19" Industrial, Hazloc rated, NEMA 4X, IP65/IP66, stainless steel, resistive touch screen



Computer and PXIe Chassis,
Rear View



Left Side View



Custom PCB Rack

* Specifications are subject to change without notice.

Electrical Specifications

<i>Quantity</i>	<i>Channel Name</i>	<i>Range</i>	<i>% Reading</i>	<i>% Range</i>
8	Aux AI Inputs	+/-10 VDC	0.04%	0.05%
2	DC Prog. Supply 1 & 2 Volts	0-40 VDC	0.04%	0.1%
2	DC Supply 1 & 2 Amps	0-9 Amps	0.05%	1.0%
6	Solenoid Volts	0-40 VDC	0.05%	0.05%
4	PAVM A-D	+/-100%	0.04%	0.06%
4	AC Supply Volts A-D	0-28 VAC, 50-6500Hz	0.2%	0.05%
4	RMS Volts 1-4	0-28 VAC	0.2%	0.05%
4	Current Sense 1-4	+/-80mA, +/-200mA, +/-1000mA	0.05%	0.05%
4	Servo Volts 1-4	+/-28 VDC	0.1%	0.05%
28	Hyd. Pressure (Legacy) AI 1-28	+/-10 VDC	0.04%	0.05%
2	Hyd. Temp. 1-2	100 – 160 ohms	N/A	+/- 1 ohm
6	CL Aux In (1,1b,1c,2,2b,2c)	+/-10 VDC	0.04%	0.05%
3	Hyd. Flow 1-3	0-28800 Hz	N/A	0.05%
10	Analog Command Outputs (Legacy)	+/-10 VDC	N/A	0.02%
4	AUX Analog Command Outputs	+/-10 VDC	N/A	0.02%
4	AC Excitation Supply A-D	0-28 VAC, 50-6500Hz	N/A	3% of setting, +/- 0.1% of prog. Freq. or 1Hz (whichever is greater), 200mA max out (4 LVDT's combined)
8	Digital Inputs (Legacy)	10-32 Volts	N/A	N/A
23	Digital Outputs (Legacy)	5-30 VDC / 110 VAC, 4A	N/A	N/A
2	Switch 1-2 Volts	Open=0.1V, Closed = 9.9V	N/A	1%
2	Spare Digital Inputs	10-32 Volts	N/A	N/A
8	Spare Digital Outputs	5-30 VDC / 110 VAC, 4A	N/A	N/A
8	AUX Relays	5-30 VDC / 110 VAC, 5A	N/A	N/A
6	Solenoid Outputs	0-40 VDC, 3A	N/A	N/A

* Specifications are subject to change without notice.